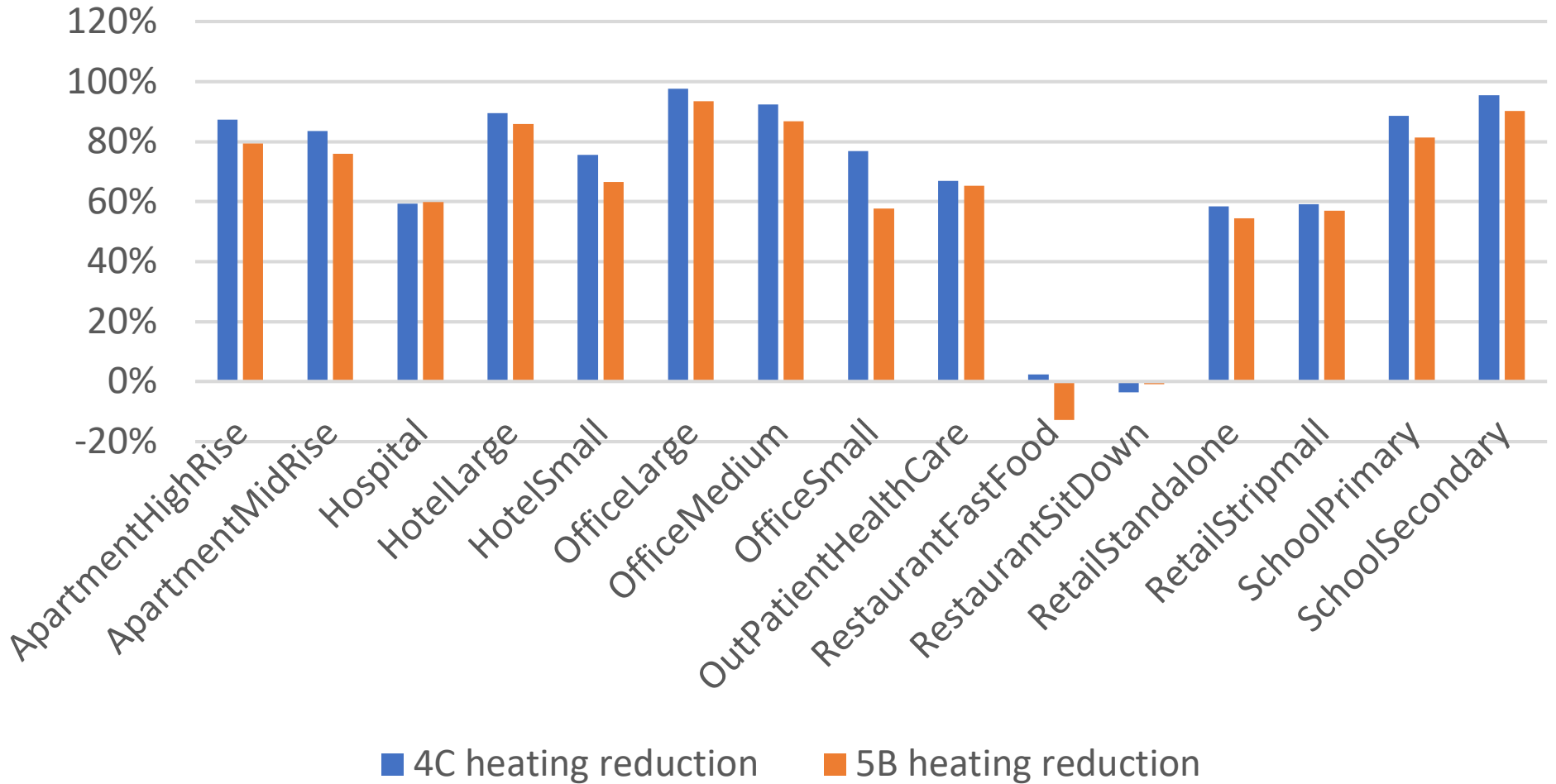


Space Heating Reduction

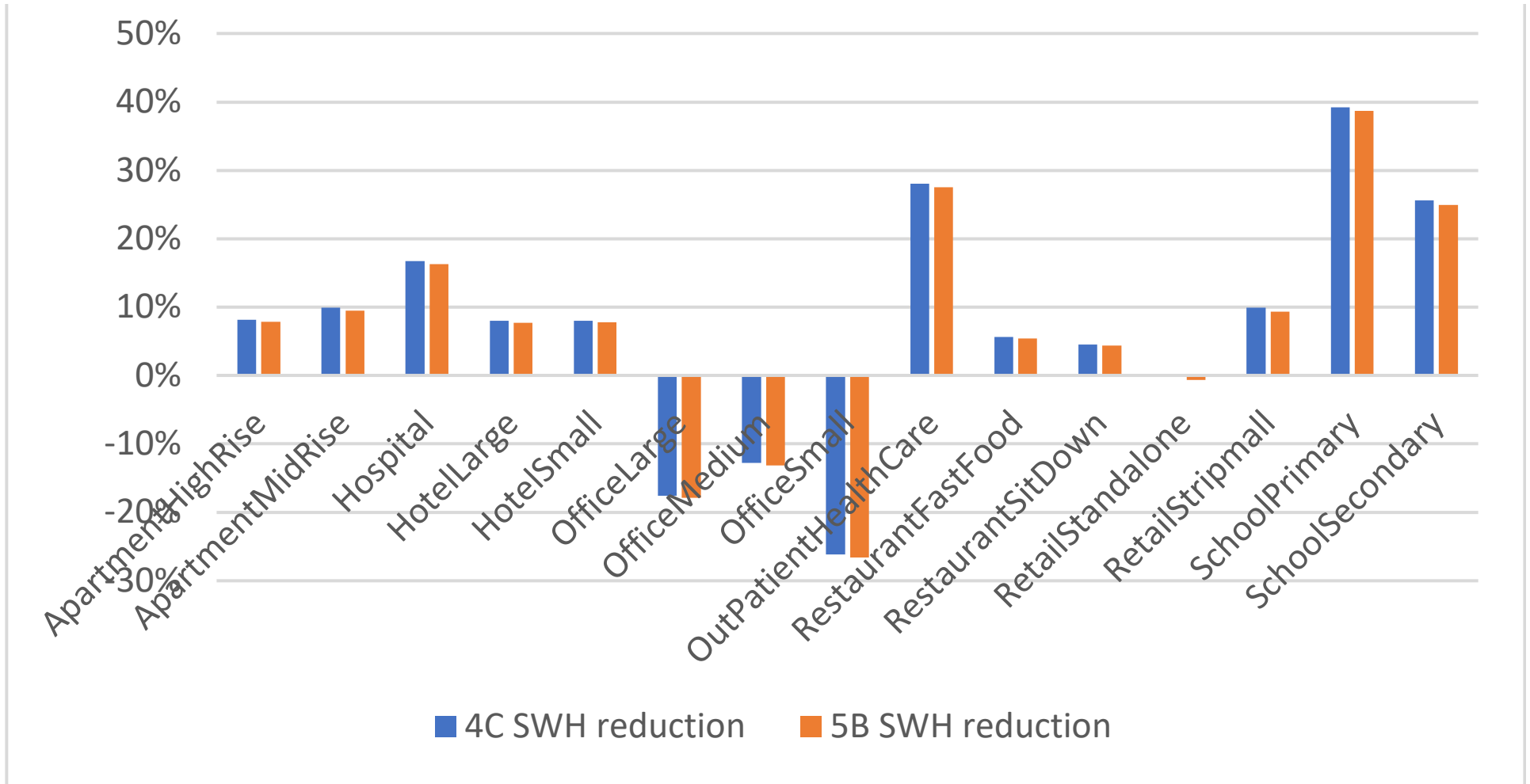
ASHRAE 90.1-2007 to WSEC-C 2024 without C406
In most cases, 4C has greater heating reduction than 5B



Water Heating Reduction

ASHRAE 90.1-2007 to WSEC-C 2024 without C406

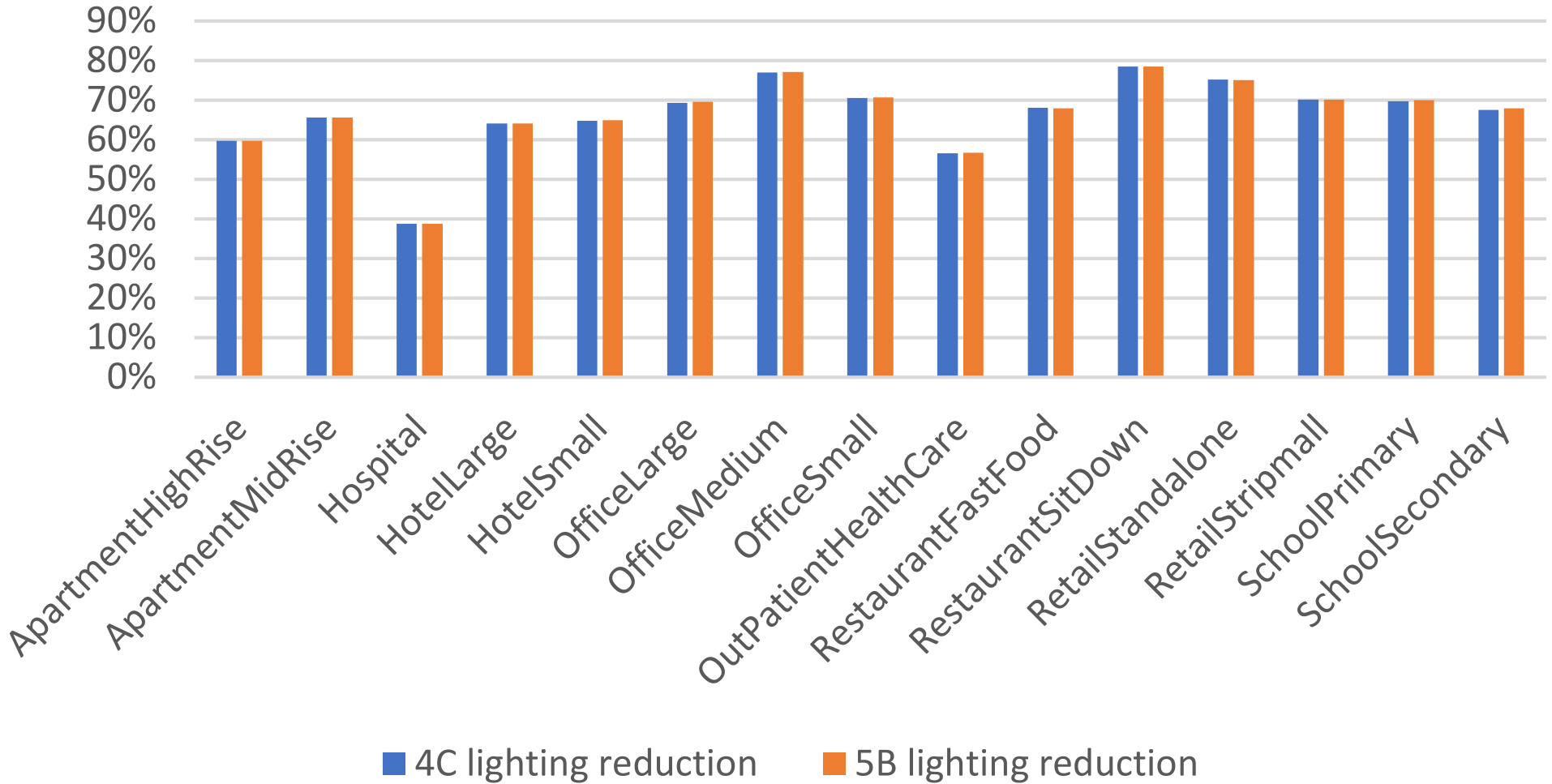
In most cases, 4C has greater water heating reduction than 5B



Water Lighting Reduction

ASHRAE 90.1-2007 to WSEC-C 2024 without C406

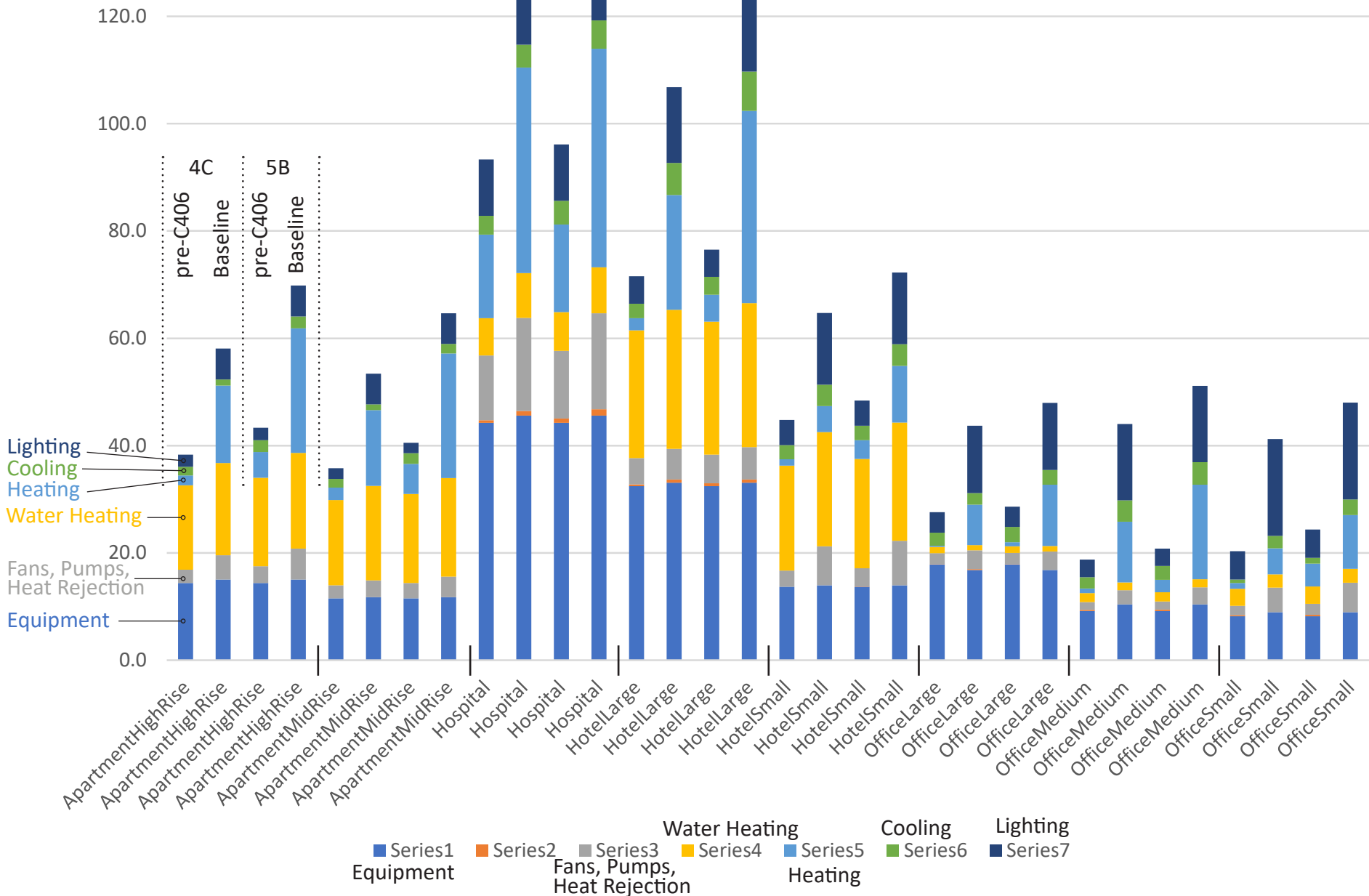
4C and 5B have equivalent lighting reductions



Stacked Energy Use Chart

ASHRAE 90.1-2007 to WSEC-C 2024 without C406

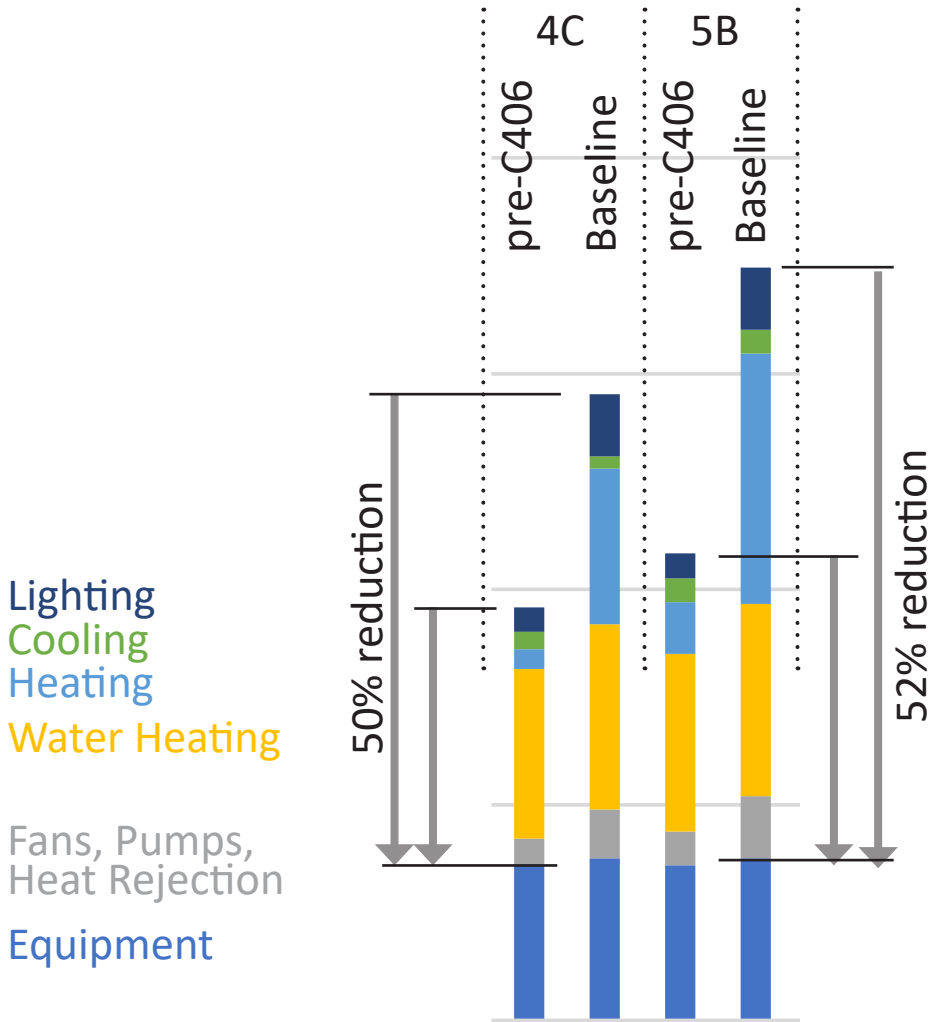
4C and 5B have equivalent lighting reductions



Stacked Energy Use Chart

ASHRAE 90.1-2007 to WSEC-C 2024 without C406

4C and 5B have equivalent lighting reductions



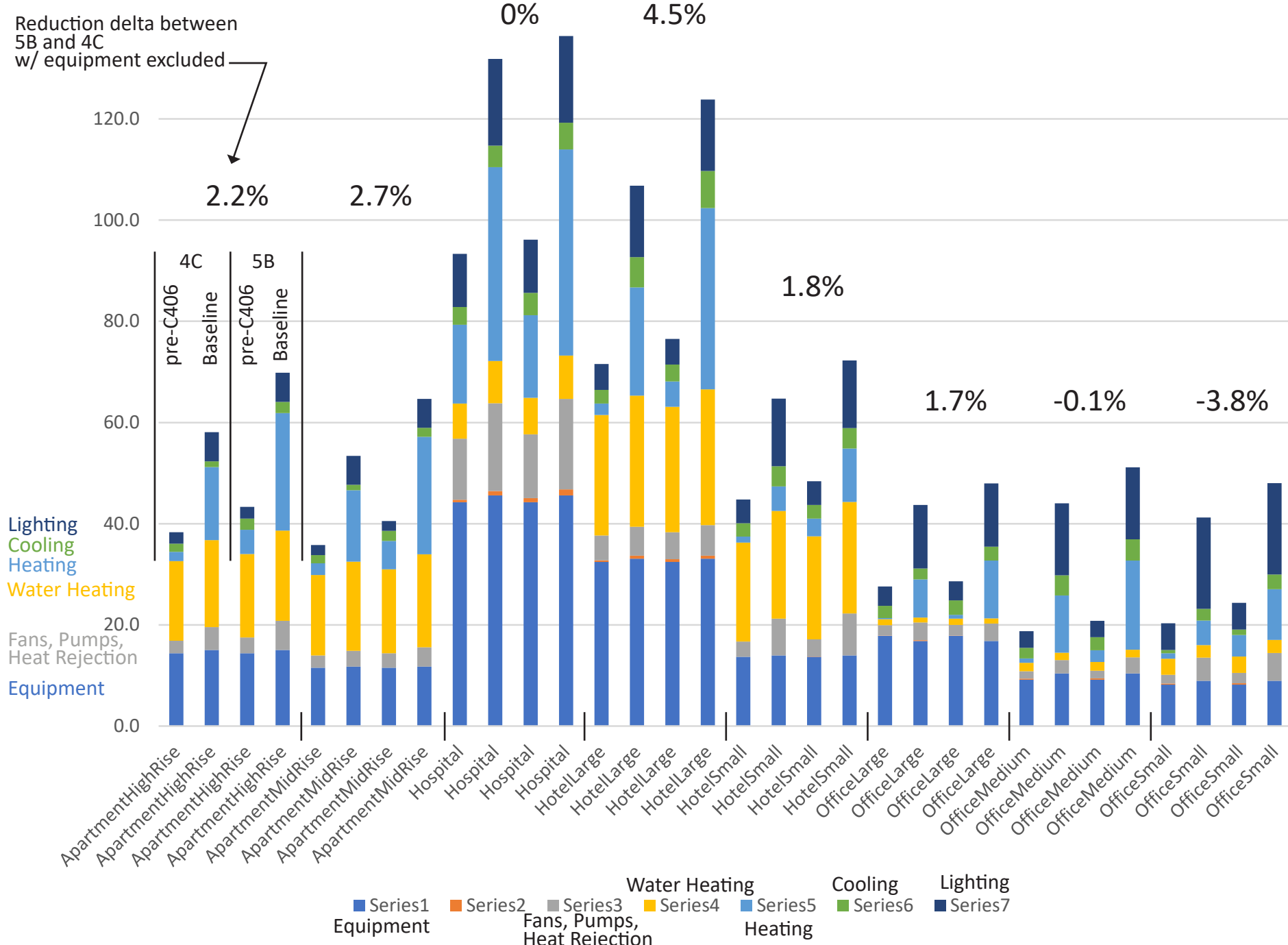
High Rise Apartment Example

2.2% Difference 4C to 5B
At most 22 points delta

Stacked Energy Use Chart

ASHRAE 90.1-2007 to WSEC-C 2024 without C406

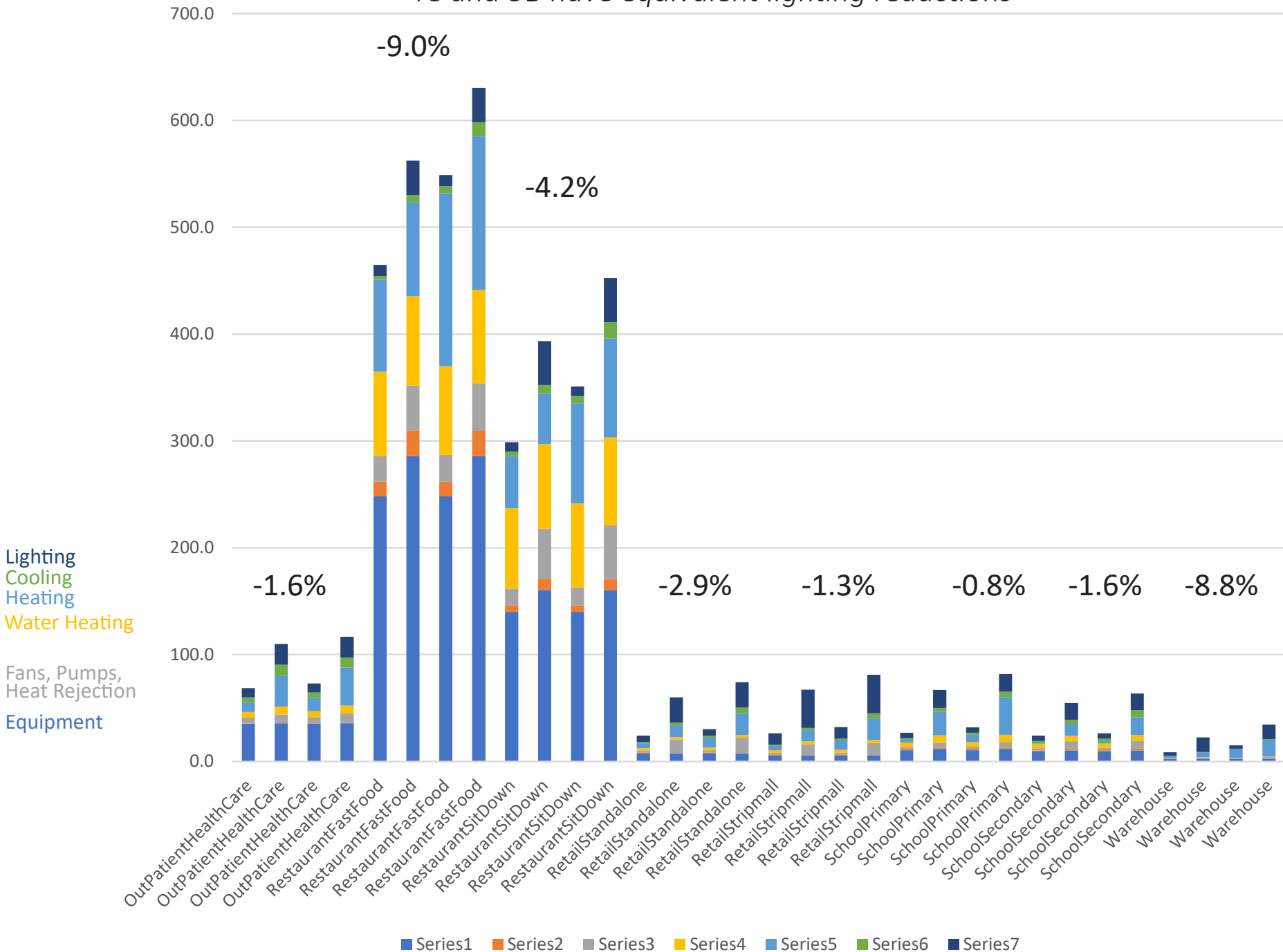
Poitive % shows more savings in 5B than in 4C when excluding equipment



Stacked Energy Use Chart

ASHRAE 90.1-2007 to WSEC-C 2024 without C406

4C and 5B have equivalent lighting reductions



Conclusion

In all cases, significantly lower points required for 5B
is not justified by climate